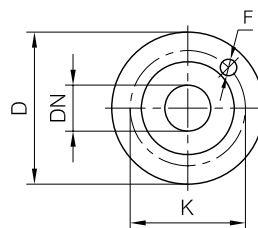


(h3) Spessori per allineamento motore-pompa esclusi dalla fornitura.
Raising pads for motor-pump alignment are not supplied by pompetravaini.

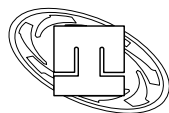
(1) Dimensioni in funzione della marca del motore installato.
Not certified dimensions according to installed motor manufacture.



FLANGE: Dimensioni secondo UNI 2223 - 2229 PN16
FLANGES: Dimensions to UNI 2223-2229 NP16 standards

| POMPA TIPO Pump type | gr. | Dimensioni costruttive Construction dimensions | | | | | | | | | | | | | |
|-------------------------|-----|--|-----|-----|-----|-----|----|----|-----|-----|-----|-----|----|-----|-----|
| | | DNa | DNm | a | h1 | h2 | b | c | m1 | m2 | n1 | n2 | s1 | e1 | e2 |
| 32-125 | 1 | 50 | 32 | 80 | 112 | 140 | 50 | 15 | 100 | 70 | 190 | 140 | 14 | 105 | 91 |
| 32-160 | 1 | 50 | 32 | 80 | 132 | 160 | 50 | 16 | 100 | 70 | 240 | 190 | 14 | 125 | 110 |
| 32-200 | 1 | 50 | 32 | 80 | 160 | 180 | 50 | 16 | 100 | 70 | 240 | 190 | 14 | 140 | 130 |
| 40-125 | 1 | 65 | 40 | 80 | 112 | 140 | 50 | 15 | 100 | 70 | 210 | 160 | 14 | 115 | 100 |
| 40-160 | 1 | 65 | 40 | 80 | 132 | 160 | 50 | 16 | 100 | 70 | 240 | 190 | 14 | 130 | 115 |
| 40-200 | 1 | 65 | 40 | 100 | 160 | 180 | 50 | 16 | 100 | 70 | 265 | 212 | 14 | 146 | 135 |
| 50-125 | 1 | 80 | 50 | 100 | 132 | 160 | 50 | 16 | 100 | 70 | 240 | 190 | 14 | 130 | 110 |
| 50-160 | 1 | 80 | 50 | 100 | 160 | 180 | 50 | 16 | 100 | 70 | 265 | 212 | 14 | 147 | 125 |
| 50-200 | 1 | 80 | 50 | 100 | 160 | 200 | 50 | 16 | 100 | 70 | 265 | 212 | 14 | 161 | 146 |
| 32-250 | 2 | 50 | 32 | 100 | 180 | 225 | 65 | 18 | 125 | 95 | 320 | 250 | 14 | 166 | 162 |
| 40-250 | 2 | 65 | 40 | 100 | 180 | 225 | 65 | 18 | 125 | 95 | 320 | 250 | 14 | 176 | 163 |
| 50-250 | 2 | 80 | 50 | 125 | 180 | 225 | 65 | 18 | 125 | 95 | 320 | 250 | 14 | 183 | 169 |
| 65-160 | 2 | 100 | 65 | 100 | 160 | 200 | 65 | 16 | 125 | 95 | 280 | 212 | 14 | 160 | 130 |
| 65-200 | 2 | 100 | 65 | 100 | 180 | 225 | 65 | 18 | 125 | 95 | 320 | 250 | 14 | 174 | 152 |
| 65-250 | 2 | 100 | 65 | 125 | 200 | 250 | 80 | 20 | 160 | 120 | 360 | 280 | 18 | 195 | 175 |
| 80-160 | 2 | 125 | 80 | 125 | 180 | 225 | 65 | 16 | 125 | 95 | 320 | 250 | 14 | 186 | 142 |
| 80-200 | 2 | 125 | 80 | 125 | 180 | 250 | 65 | 18 | 125 | 95 | 345 | 280 | 14 | 188 | 158 |
| 80-250 | 2 | 125 | 80 | 125 | 225 | 280 | 80 | 20 | 160 | 120 | 400 | 315 | 18 | 225 | 185 |
| 100-200 | 2 | 125 | 100 | 125 | 200 | 280 | 80 | 20 | 160 | 120 | 360 | 280 | 18 | 211 | 170 |

| Dimensioni flange Flanges dimensions | | | | |
|---|-----|-----|----|------------------|
| DNa-DNm | D | K | F | N° fori holes |
| 25 | 115 | 85 | 14 | 4 |
| 32 | 140 | 100 | 18 | 4 |
| 40 | 150 | 110 | 18 | 4 |
| 50 | 165 | 125 | 18 | 4 |
| 65 | 185 | 145 | 18 | 4 |
| 80 | 200 | 160 | 18 | 8 |
| 100 | 220 | 180 | 18 | 8 |
| 125 | 250 | 210 | 18 | 8 |



| POMPA TIPO Pump type | motore motor 80-90 | | | | | motore motor 100-112 | | | | | motore motor 132 | | | | | motore motor 160 | | | | | motore motor 180 |
|-------------------------|--------------------|-------|-------|-------------|-------|----------------------|----|-----|------|-------------|------------------|----|-----|------|-------------|------------------|----|-----|------|-------------|------------------|
| | gr. | p | G1 | Peso Weight | | p | G1 | h3 | H | Peso Weight | p | G1 | h3 | H | Peso Weight | p | G1 | h3 | H | Peso Weight | |
| 32-125 | 1 | 180 | 138 | 26 | 205 | 138 | 20 | 132 | 30 | 229 | 137 | 48 | 160 | 31 | 258 | 137 | 68 | 180 | 44 | | |
| 32-160 | 1 | 186.5 | 194.5 | 31 | 211.5 | 138 | - | - | 35 | 235.5 | 193.5 | 28 | 160 | 36 | 264.5 | 193.5 | 48 | 180 | 49.5 | | |
| 32-200 | 1 | 186.5 | 194.5 | 39 | 211.5 | 194.5 | - | - | 43 | 235.5 | 193.5 | - | 160 | 44.5 | 264.5 | 193.5 | 20 | 180 | 57.5 | | |
| 40-125 | 1 | 180 | 138 | 27.5 | 205 | 138 | 20 | 132 | 31.5 | 229 | 137 | 48 | 160 | 33 | 258 | 137 | 68 | 180 | 46 | | |
| 40-160 | 1 | 186.5 | 194.5 | 32.5 | 211.5 | 138 | - | - | 36.5 | 235.5 | 193.5 | 28 | 160 | 37.5 | 264.5 | 193.5 | 48 | 180 | 51 | | |
| 40-200 | 1 | 186.5 | 194.5 | 42 | 211.5 | 194.5 | - | - | 46 | 235.5 | 193.5 | - | 160 | 47 | 264.5 | 193.5 | 20 | 180 | 60.5 | | |
| 50-125 | 1 | 180 | 141 | 32 | 205 | 141 | - | - | 36 | 229 | 140 | 28 | 160 | 37 | 258 | 140 | 48 | 180 | 50.5 | | |
| 50-160 | 1 | 186.5 | 194.5 | 39 | 211.5 | 194.5 | - | - | 43 | 235.5 | 193.5 | - | 160 | 44 | 264.5 | 193.5 | 20 | 180 | 57 | | |
| 50-200 | 1 | 186.5 | 194.5 | 46 | 211.5 | 194.5 | - | - | 50 | 235.5 | 193.5 | - | 160 | 51 | 264.5 | 193.5 | 20 | 180 | 64 | | |
| 32-250 | 2 | 206.5 | 214.5 | 59 | 231.5 | 214.5 | - | - | 63 | 255.5 | 213.5 | - | 180 | 64.5 | 284.5 | 213.5 | - | 180 | 78 | | |
| 40-250 | 2 | 208 | 216 | 60 | 233 | 216 | - | - | 64 | 257 | 215 | - | 180 | 65.5 | 286 | 215 | - | 180 | 79 | | |
| 50-250 | 2 | 206.5 | 214.5 | 62.5 | 231.5 | 214.5 | - | - | 67 | 255.5 | 213.5 | - | 180 | 68 | 284.5 | 213.5 | - | 180 | 81.5 | | |
| 65-160 | 2 | 201.5 | 209.5 | 47 | 226.5 | 209.5 | - | - | 51.5 | 250.5 | 208.5 | - | 160 | 52.5 | 279.5 | 208.5 | 20 | 180 | 66 | | |
| 65-200 | 2 | 201.5 | 209.5 | 55 | 226.5 | 209.5 | - | - | 59.5 | 250.5 | 208.5 | - | 180 | 60.5 | 279.5 | 208.5 | - | 180 | 74 | | |
| 65-250 | 2 | 213 | 221 | 73 | 238 | 221 | - | - | 77 | 262 | 220 | - | 200 | 78.5 | 291 | 220 | - | 200 | 92 | | |
| 80-160 | 2 | 201.5 | 210.5 | 58.5 | 226.5 | 210.5 | - | - | 63 | 250.5 | 209.5 | - | 180 | 64 | 279.5 | 209.5 | - | 180 | 78 | | |
| 80-200 | 2 | 200 | 208 | 61 | 225 | 208 | - | - | 65 | 249 | 207 | - | 180 | 66.5 | 278 | 207 | - | 180 | 80 | | |
| 80-250 | 2 | 213 | 221 | 84 | 237.5 | 221 | - | - | 88 | 262 | 220 | - | 225 | 89.5 | 290.5 | 220 | - | 225 | 103 | | |
| 100-200 | 2 | 204.5 | 209.5 | 75 | 229.5 | 209.5 | - | - | 79.5 | 253.5 | 208.5 | - | 200 | 81 | 282.5 | 208.5 | - | 200 | 94.5 | | |

Vedere costruzione / See construction
TCTM / 1-C/B35 gr.2

| MOTORI ELETTRICI Electric Motors | | | | |
|-------------------------------------|--------------------------|-----|--------------------------|--------|
| Grandezza Frame size IEC | Giri/min. RPM 1450 | | Giri/min. RPM 2900 | |
| | kW | HP | kW | HP |
| 80 M | 0.55 | 0.7 | 0.75 | 1 |
| | 0.75 | 1 | 1.1 | 1.5 |
| 90 S | 1.1 | 1.5 | 1.5 | 2 |
| 90 L | 1.5 | 2 | 2.2 | 3 |
| 100 L | 2.2 | 3 | 3 | 4 |
| | 3 | 4 | | |
| 112 M | 4 | 5.5 | 4 | 5.5 |
| 132 S | 5.5 | 7.5 | 5.5-7.5 | 7.5-10 |
| 132 M | 7.5 | 10 | | |
| 160 M | 11 | 15 | 11-15 | 15-20 |
| 160 L | 15 | 20 | 18.5 | 25 |
| 180 M | 18.5 | 25 | 22 | 30 |
| 180 L | 22 | 30 | | |

(h3) Spessori per allineamento motore-pompa esclusi dalla fornitura.
Raising pads for motor-pump alignment are not supplied by pompetravaini.

Disegno schematico. Dimensioni in mm con tolleranze secondo EN 735-1995.
Pesi indicativi in Kg, riferiti a pompe in ghisa escluso motore, non impegnativi.
Schematic drawing. Dimensions in mm with tolerances to EN 735-1995 standards.
Weights in Kgs, referred to pumps in cast iron without motor, not certified.